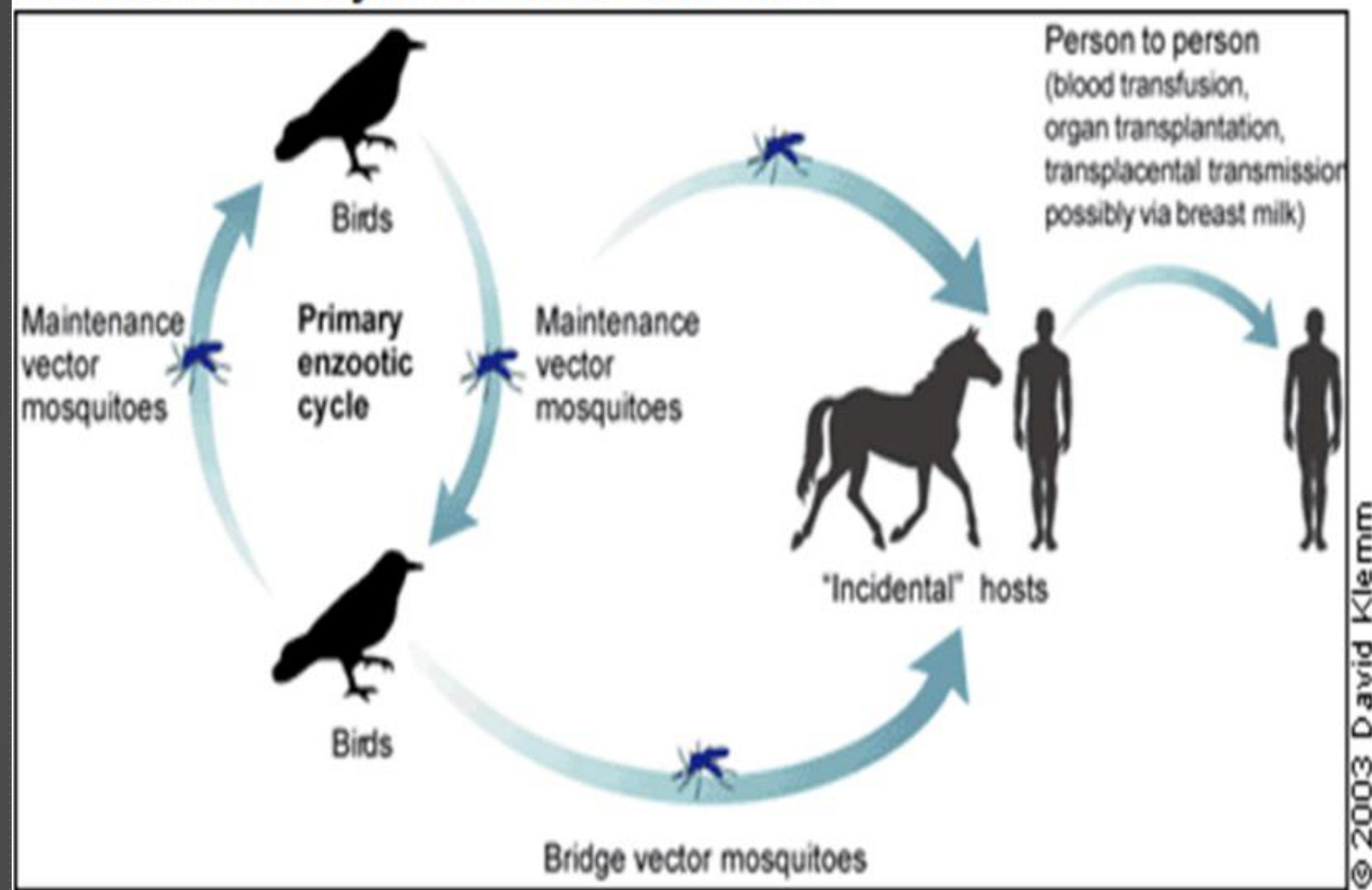


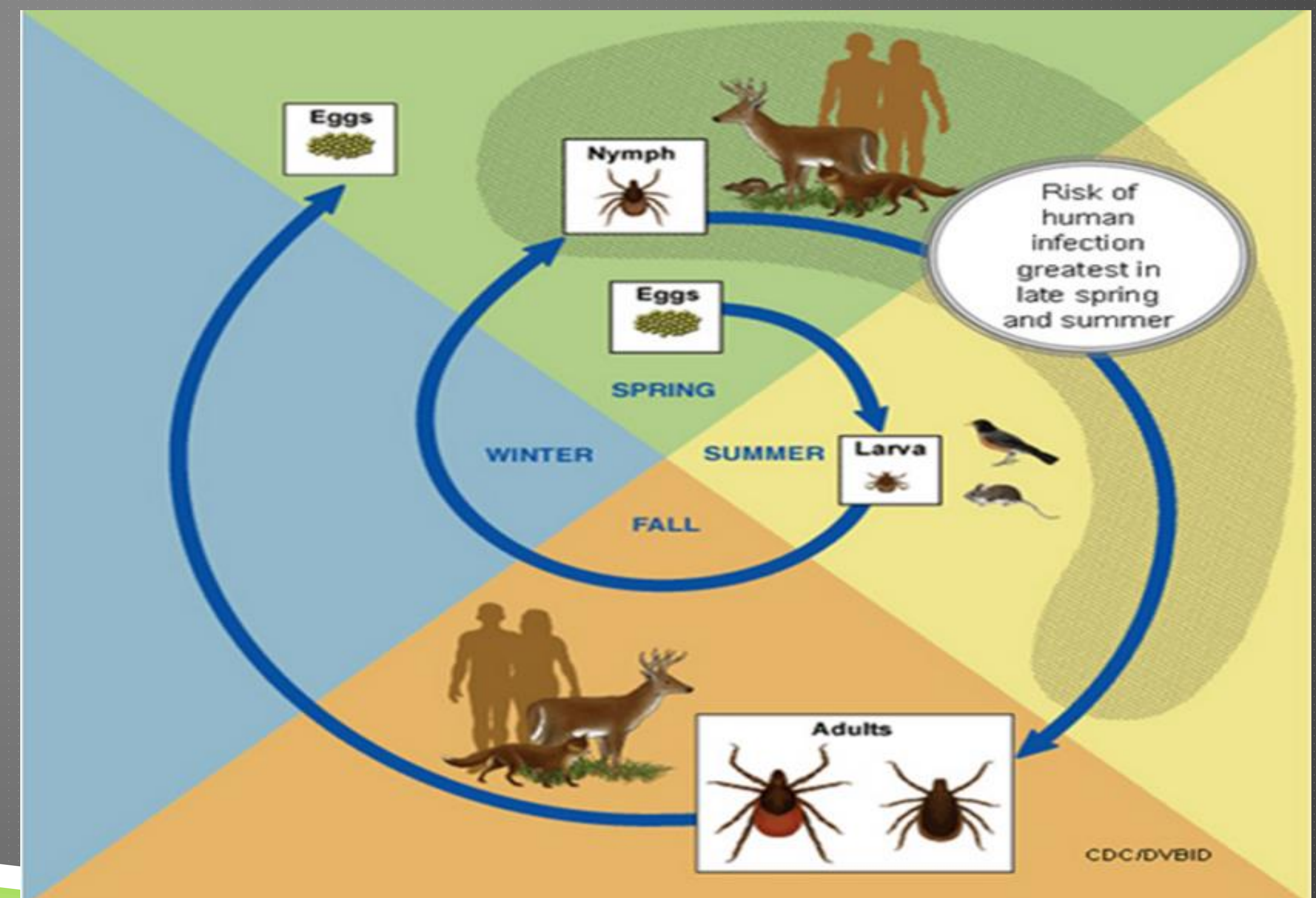
# CLIMATE CHANGE AND VECTOR-BORNE DISEASE

ROBERT ONDERS  
RONDERS@ALASKA.EDU

Transmission Cycle of West Nile Virus



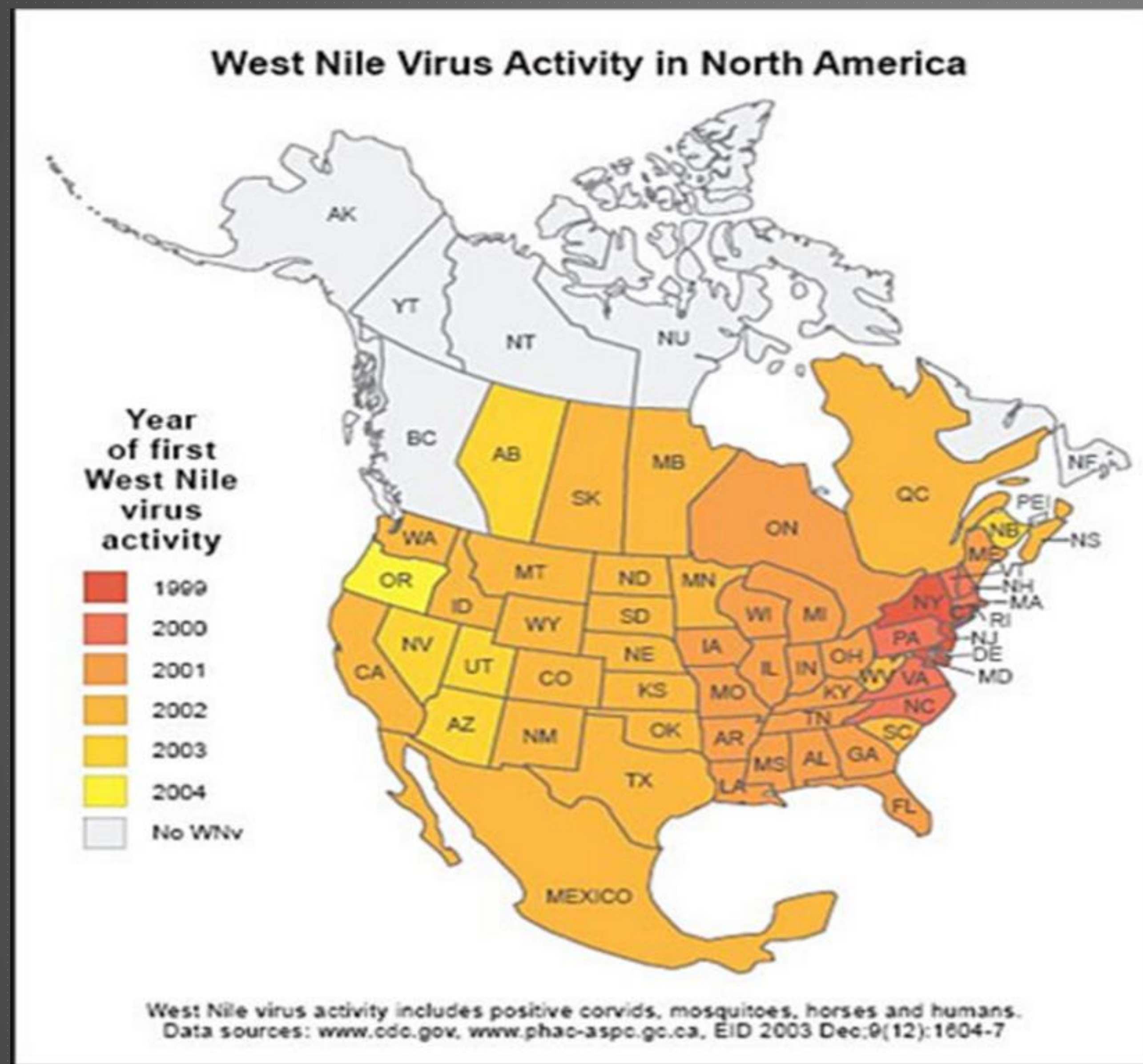
- 51,000 vector-borne disease cases were reported in 2013.
- WNV and Lyme Disease make up over 37,000 of these cases.





# CLIMATE CHANGE AND VECTOR-BORNE DISEASE

ROBERT ONDERS  
RONDERS@ALASKA.EDU





# WHAT IS NEEDED?

- ▶ Establish baseline data on the geographic and habitat distribution vector-borne pathogens, hosts, and vectors.
- ▶ Longitudinal surveillance programs.
- ▶ Laboratory and field studies of effects of climate change on vector-borne pathogens, hosts, and vectors.
- ▶ Develop predictive models of changes in vector-borne pathogens, hosts, and vectors.