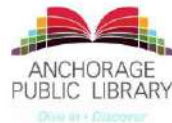


Climate Change is Here: What can you do?

Introduction to the Anchorage Climate Action Plan



Changing Climate in Anchorage

Climate change boosts risk of extreme wildfires

December 16, 2016



Jeff Richardson
907-474-6264

University of Alaska Fairbanks scientists are presenting their work at the American Geophysical Union's fall meeting in San Francisco this week. Here are some highlights of their research, as shared at the world's largest Earth and space science meeting.

A newly published report concludes that climate



HEAT: COPING WITH A WARMING WORLD

Gulf Of Alaska Cod Are Disappearing. Blame 'The Blob'

July 31, 2016 10:24 AM ET
Heard on All Things Considered

ANNIE FEIDT

FROM **AK**
ALASKA NEWS SERVICE



Arctic

Forget snowfall -- winter rain becoming new normal in Alaska and Arctic

Author: Yereth Rosen | Arctic Updated: May 31, 2016 Published January 28, 2014

Energy & Environment

Tick, tick, tick: Alaska braces for invading parasites



FILE - In this updated file photo provided to the U.S. Centers for Disease Control and Prevention (CDC), a black-legged tick

Mat-Su

Beetle damage skyrockets to nearly a million acres in Southcentral Alaska

Author: Zaz Hollander Updated: October 2 Published October 1



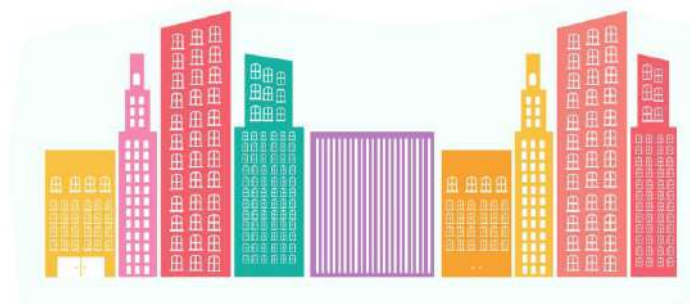
Spruce bark beetle-killed trees stand in the boreal forest along Knik-Goose Bay Road on June 5. (Loren Holmes / ADN)

Buy This Photo

What is a Climate Action Plan?

A strategic roadmap for measuring and reducing greenhouse gas emissions and preparing for the impacts of climate change.

The **Municipality of Anchorage** collaborated with the **University of Alaska** to create the Anchorage Climate Action Plan that was passed by the Anchorage Assembly in May 2019.



Who has a Climate Action Plan?

9,100 cities representing ~800 M people are now committed to creating city-wide climate action plans

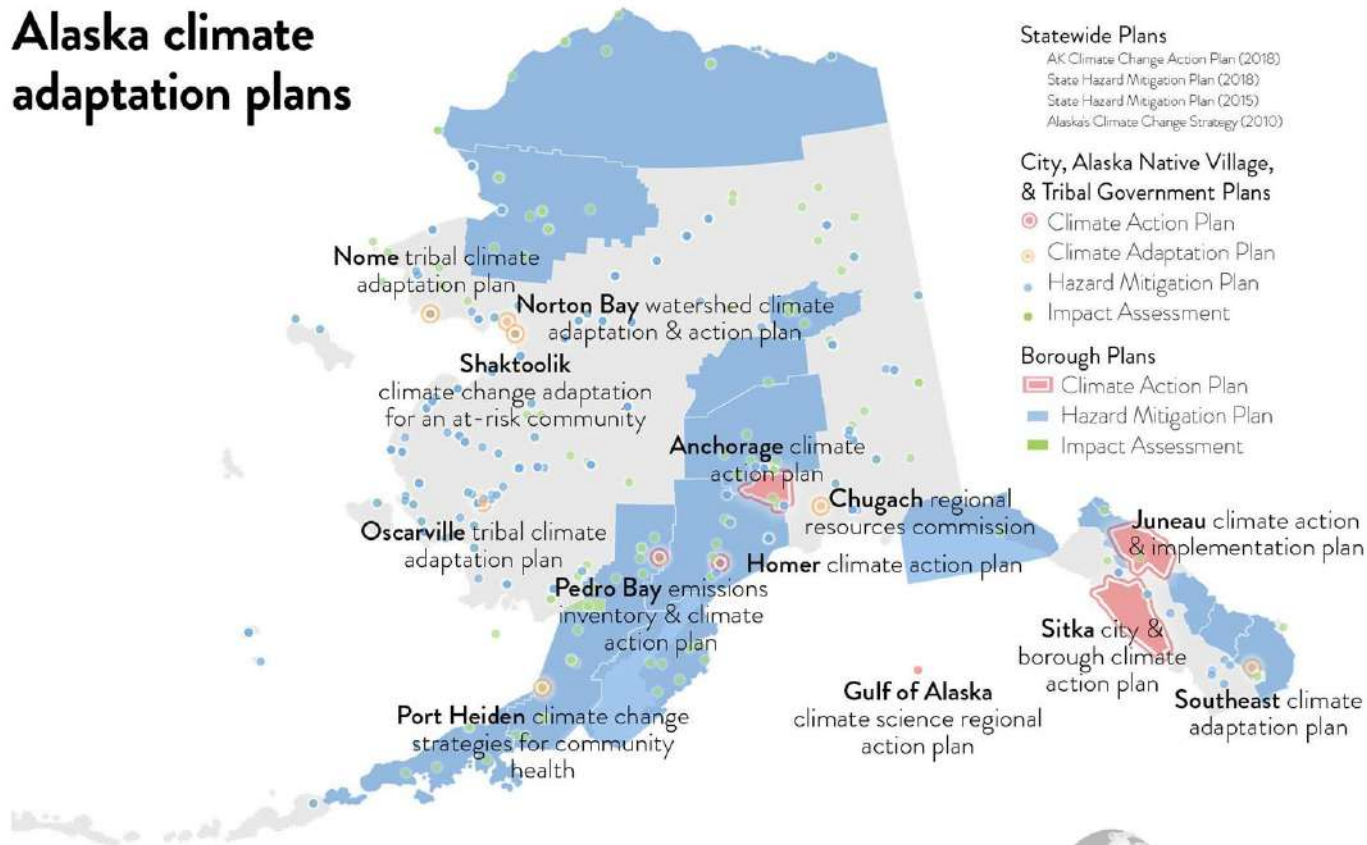
WE ARE STILL IN



GLOBAL COVENANT
of MAYORS for
CLIMATE & ENERGY



Alaska climate adaptation plans



Credit: Kelsey Aho, Center for Alaska Policy Studies.

Data source:s DEECD; Meeker and Kettle, 2017

Panelists

- **Mara Kimmel**, Anchorage Mayor's Office, Lead, Resilience + Welcoming Initiatives
- **Micah Hahn**, University of Alaska Anchorage, Institute for Circumpolar Health Studies
- **Shaina Kilcoyne**, Municipality of Anchorage, Energy and Sustainability Manager

Anchorage: Transformation and Opportunity



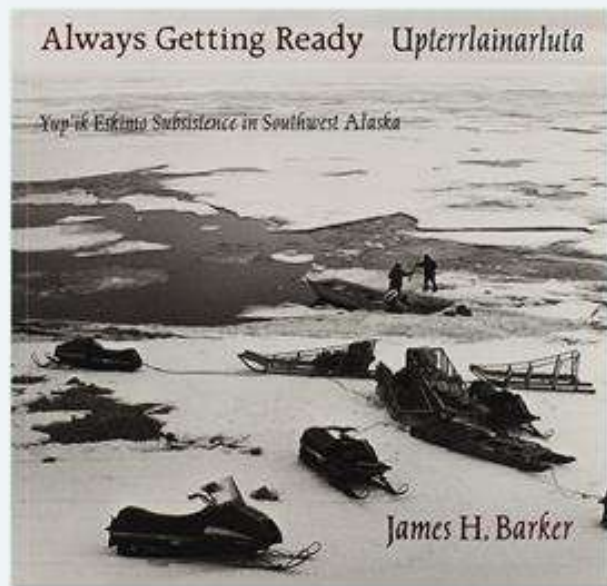
Community Values and Vision

*Always Getting Ready**

SELF RELIANT

VIBRANT, VITAL CULTURES

CONNECTED with PLACE



* From Barker, *Upterrlainarluta - Always Getting Ready: Yup'ik Eskimo Subsistence in Southwest Alaska*.

Resilience and Equity in Anchorage

Ready, Inclusive, Connected

The capacity of a community to survive and thrive through
acute shocks and **chronic stresses**



Fires, floods, earthquakes,
erosion, freeze-thaw cycles

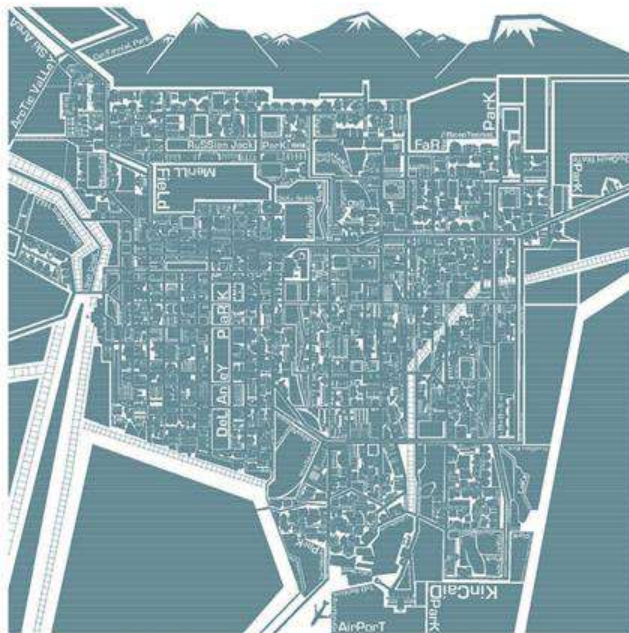


Unemployment, inadequate
housing, poverty, poor
infrastructure and
communication networks,
social and economic
exclusion



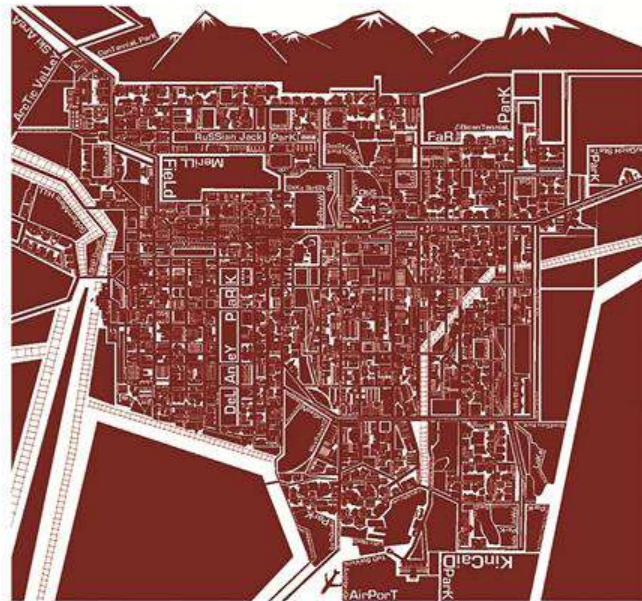
Welcoming Anchorage Roadmap

Our roadmap for an equitable, inclusive, diverse Anchorage



Resilient Anchorage Roadmap

A roadmap for success and innovation in a time of transformation



Map by Lucie Conoley, provided courtesy of the Anchorage Museum



Welcoming Anchorage Roadmap

Our roadmap for an equitable, inclusive, diverse Anchorage

Our Roadmap

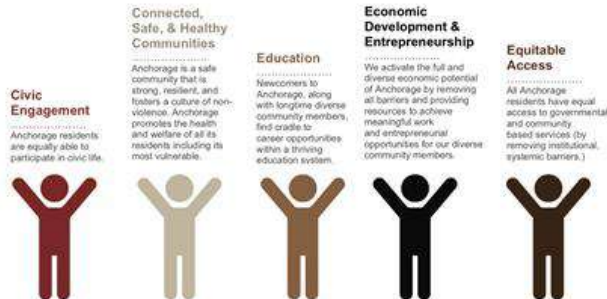


Our **VISION** is that Anchorage is a globally competitive, culturally vibrant community where every resident feels a sense of belonging and has equal opportunity to access all the community offers.

Our efforts to create a more welcoming community are instilled with the following shared **VALUES**



Five pillars organize and drive our welcoming activities to the **VEHICLE** for change in our community.



Resilient Anchorage Roadmap

A roadmap for success and innovation in a time of transformation

Our Roadmap



Our **VISION** is that Anchorage has the capacity to thrive and survive through acute shocks and chronic stresses

Fires, floods, earthquakes, erosion, freeze-thaw cycles

Unemployment, inadequate housing, poverty, poor infrastructure and communication networks, social and economic exclusion

Our efforts to create a more resilient community are instilled with the following shared **VALUES**



Six pillars organize and drive our resilience strategy:





ANCHORAGE

Climate Action Plan



UNIVERSITY
of ALASKA
Many Traditions One Alaska

HOW WAS THE
CLIMATE ACTION PLAN
DEVELOPED?

CAP Ecosystem

Advisory Committee

Steering Committee

Buildings and Energy

Consumption and
Solid Waste

Food Systems

Health and Emergency
Preparedness

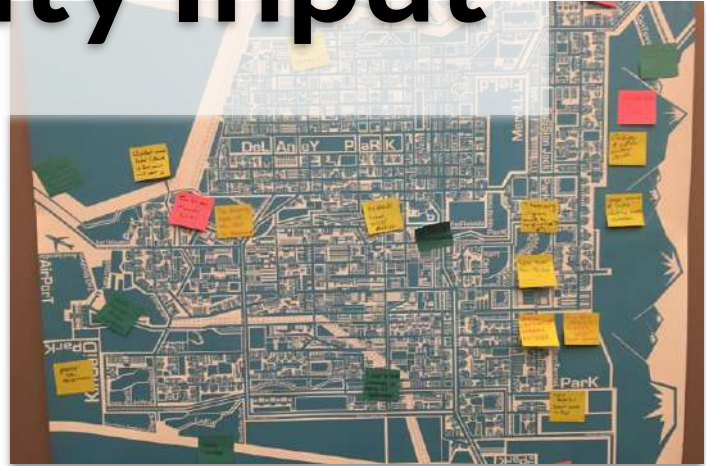
Land Use and
Transportation

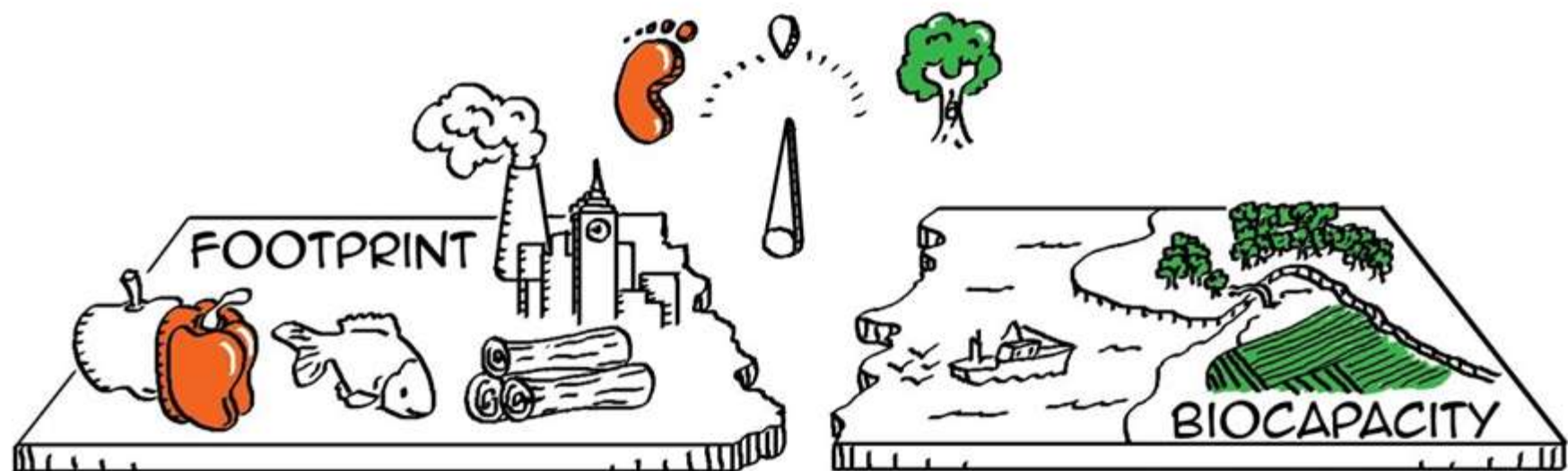
Outreach and Education

Urban Forests and
Watersheds



Community Input





ECOLOGICAL FOOTPRINT

WHAT IS YOUR

Ecological Footprint? beta

How many planets do we need if everybody lives like you?

When is your personal Overshoot Day?

TAKE THE FIRST STEP



Earth Overshoot Day 2019 is July 29

footprintcalculator.org

FOOD

How often do you eat animal-based products?

(beef, pork, chicken, fish, eggs, dairy products)

NEVER



VERY OFTEN

Occasionally

(really like veggies - occasional meat, eggs/dairy)

ADD DETAILS TO IMPROVE ACCURACY





FOOD

How often do you eat

beef or lamb?



pork?



poultry?



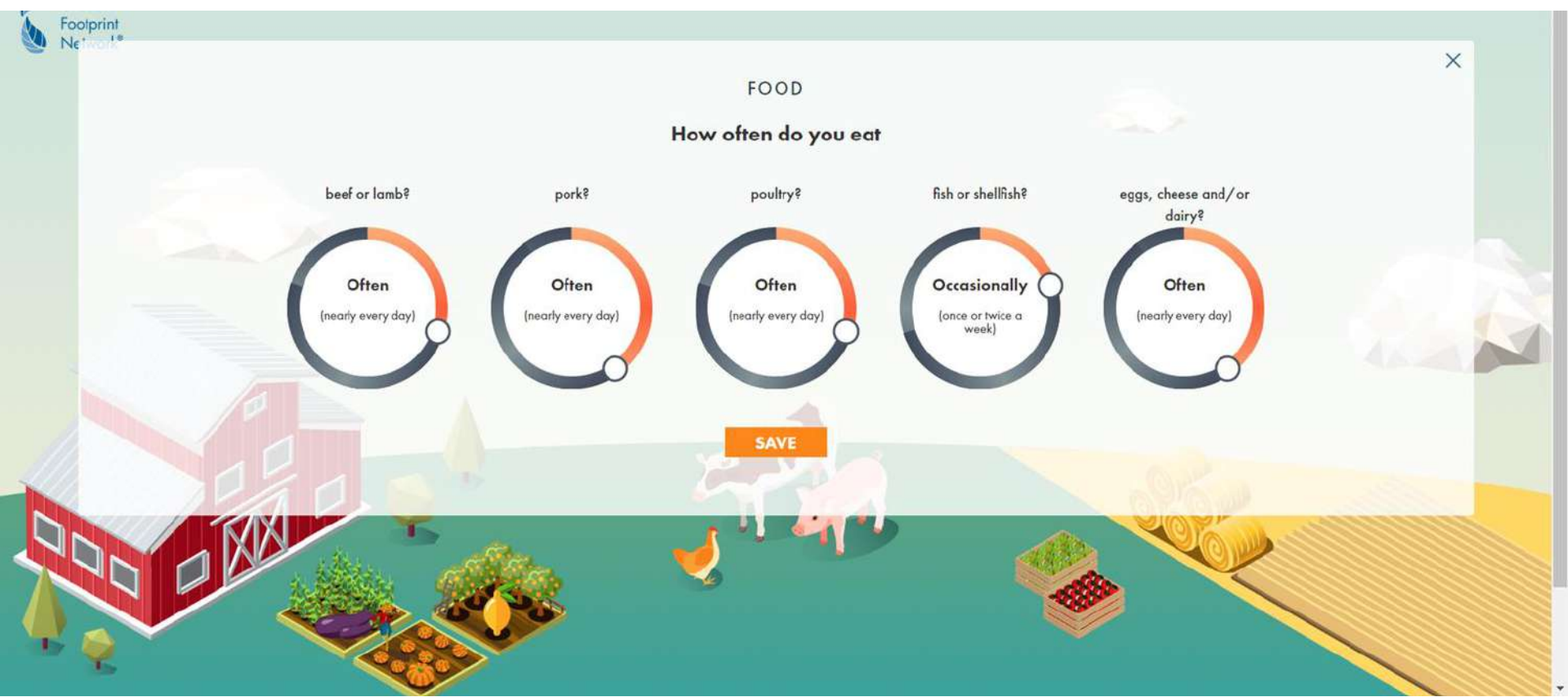
fish or shellfish?



eggs, cheese and/or dairy?



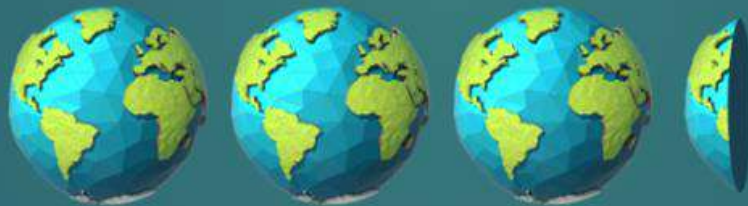
SAVE



If everyone lived like you, we would need

3.2 Earths 

[See Details](#)



By Consumption Category



Food



Shelter



Mobility



Goods



Services

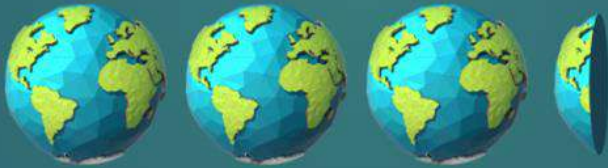


If everyone lived like you, we would need

3.2 Earths



See Details



If everyone lived like you, we would need

1.8 Earths



See Details





If everyone lived like you, we would need

3.2 Earths



See Details



If everyone lived like you, we would need

3.5 Earths



See Details



Anchorage Climate Action Plan At a Glance



Municipality of Anchorage Climate Action Strategy

A Strategy for Good Stewardship, Good Management, and Effective Preparation for an Efficient and Self-Sufficient City

The Climate Action Plan launches us toward our key goals:

- Accelerate Our Economy**
Reduce costs and increase jobs
- Steward Our Resources**
Take care of the place we live
- Prepare Our City**
Build a ready and resilient city
- Engage Our Residents**
Involve all Anchorage residents in taking action

www.muni.org/climateaction

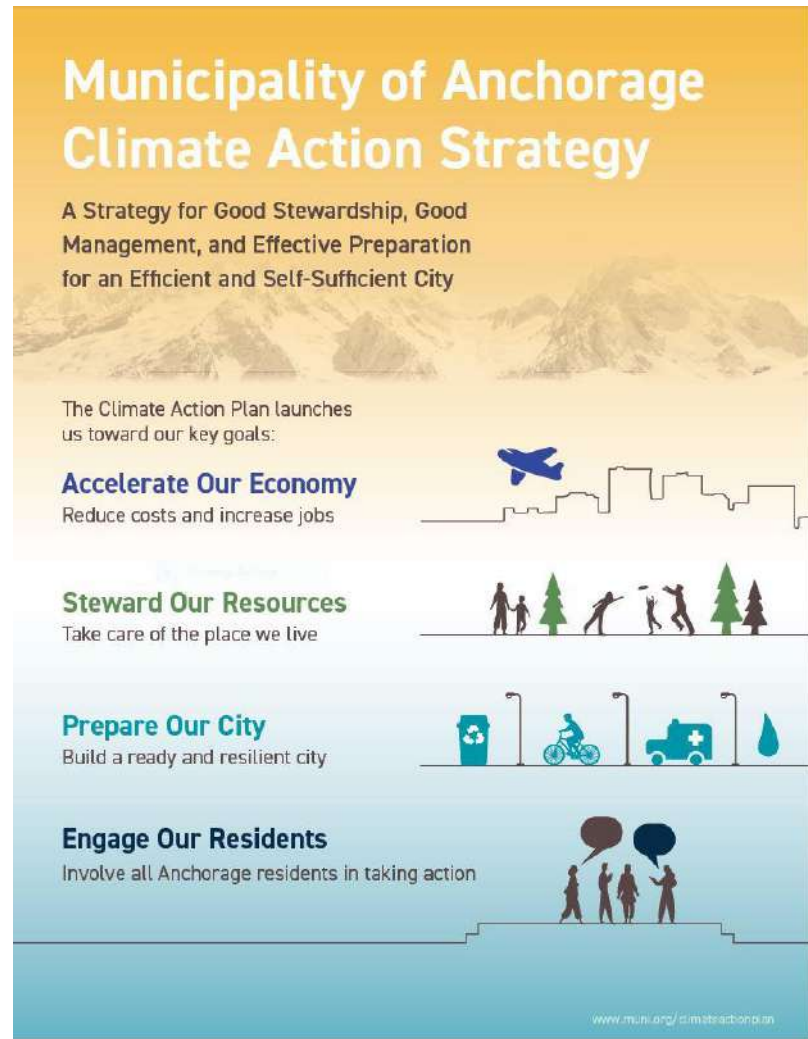


UNIVERSITY
of ALASKA
Many Traditions One Alaska

Distilled from the Anchorage Climate Action Plan

Actions are:

- Near-term
- Municipal-led
- High priority
- High impact



**Municipality of Anchorage
Climate Action Strategy**

A Strategy for Good Stewardship, Good Management, and Effective Preparation for an Efficient and Self-Sufficient City

The Climate Action Plan launches us toward our key goals:

- Accelerate Our Economy**
Reduce costs and increase jobs
- Steward Our Resources**
Take care of the place we live
- Prepare Our City**
Build a ready and resilient city
- Engage Our Residents**
Involve all Anchorage residents in taking action

www.muni.org/climateactionplan

The poster features a background of snow-capped mountains. Each goal is accompanied by icons: an airplane and city skyline for the economy; a family, trees, and people for resources; a recycling bin, bicycle, ambulance, and water drop for city preparation; and silhouettes of people talking for resident engagement.

BUILDINGS + ENERGY

GOAL: Optimize energy use in MOA facilities to save energy and money and work with private residential and commercial building owners to support safe, healthy, and affordable buildings.

- Improve energy efficiency in Municipally owned buildings
- Increase opportunities for residents and businesses to implement clean energy technology
 - Strengthen building energy standards
 - Provide financing opportunities
 - Offer incentives
 - Reduce barriers

BUILDINGS + ENERGY

GOAL: Optimize energy use in MOA facilities to save energy and money and work with private residential and commercial building owners to support safe, healthy, and affordable buildings.

- Solid Waste Services Admin
Energy Retrofit
- Solar Panels on Egan Center and
Fire Station 10
 - Anchorage Landfill in 2020!





LAND USE + TRANSPORTATION

How do you commute? Share any successes or barriers in achieving a lower carbon transportation lifestyle.





LAND USE + TRANSPORTATION

GOAL: Improve walkability and connect neighborhoods that employ mixed-use development and diverse transportation options.

- Housing infill and redevelopment to minimize car travel and increase community resilience
- Increase use of public transit and non-motorized transportation
- Electrifying vehicle fleets and promote energy efficient vehicles



Complete Streets: Spenard Corridor, Charles Boyle



LAND USE + TRANSPORTATION

GOAL: Improve walkability and connect neighborhoods that employ mixed-use development and diverse transportation options.



- \$950,000 for charging infrastructure in the railbelt
- Regional EV Infrastructure Plan in development
- MOA is testing EVs

Anchorage's new electric charging station downtown



CONSUMPTION + SOLID WASTE

GOAL: Develop an efficient and innovative solid waste management system that promotes sustainable consumption, recycling, and waste reduction.

- Increase recycling, composting, and other diversion of waste to increase the life of the landfill
- Capture more potential energy in collected refuse (e.g., organics digestion, mass burn, and landfill gas to energy expansion)
- Expand diversion opportunities by building a new Central Transfer Station



HEALTH + EMERGENCY PREPAREDNESS

GOAL: Ensure preparedness and adaptability at household, neighborhood, and municipal levels to equitably improve health and safety.

- Improve household wildfire mitigation
- Identify and develop key secondary access routes for emergency response and evacuation in the Hillside, Girdwood, Eagle River/Chugiak
- Improve language access to all residents on climate change, natural hazards, and emergency preparedness



FOOD SYSTEMS

GOAL: Support local, sustainable food systems.

- Support school and community gardens and other opportunities to expand community growing
- Encourage farmers markets to accept payment through food assistance programs
- Conduct a commercial organic waste collection pilot



Photo Credit: Michelle Fehribach



URBAN FOREST + WATERSHEDS

GOAL: Support healthy ecosystems that increase recreational opportunities, clean air and water, and habitat for wildlife.

- Develop an urban forest management plan
- Create a stormwater utility
- Continue to support APU efforts to monitor Eklutna Watershed





OUTREACH + EDUCATION

GOAL: Inform, engage, and empower Anchorage residents and leadership to find community-led climate solutions that support a sustainable future.

- Increase outreach methods for participation in planning and new programs
- Develop an online Anchorage climate action webpage and other outreach materials
- Encourage education about climate change, energy, and the development of career and technical education programs around clean energy jobs

Climate Action Plan Implementation

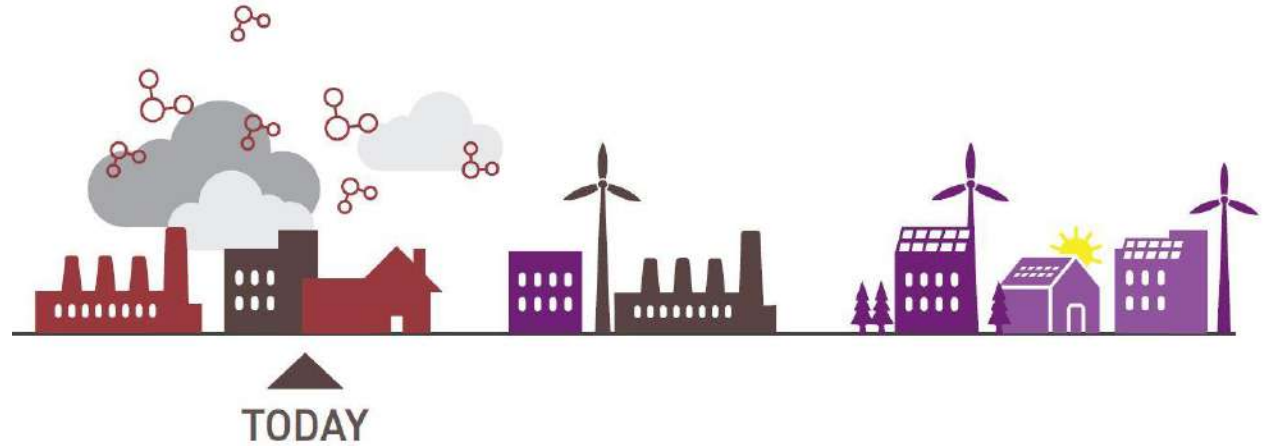
Mayor's Resilience Sub-Cabinet



Anchorage Climate Action Council



Climate Action Plan Monitoring



Performance Indicators: Buildings

- Dollars saved
- Renewable energy generated
- Facilities retrofitted to increase efficiency
- Outdoor lighting converted to LEDs

Climate Action Plan Monitoring



Performance Indicators: Transportation

- Miles of bike and pedestrian infrastructure added
- Public transit ridership
- Electric vehicles in the Municipal fleet

Climate Action Plan Monitoring



Performance Indicators: Waste

- Waste converted to energy
- Materials composted
- Materials recycled
- Per capita waste reduction



Photo: Johanna Grasso

What is your Climate Commitment?

www.muni.org/ClimateActionPlan