

The Future of Public Transit and On-Street Bicycle Transportation in Anchorage

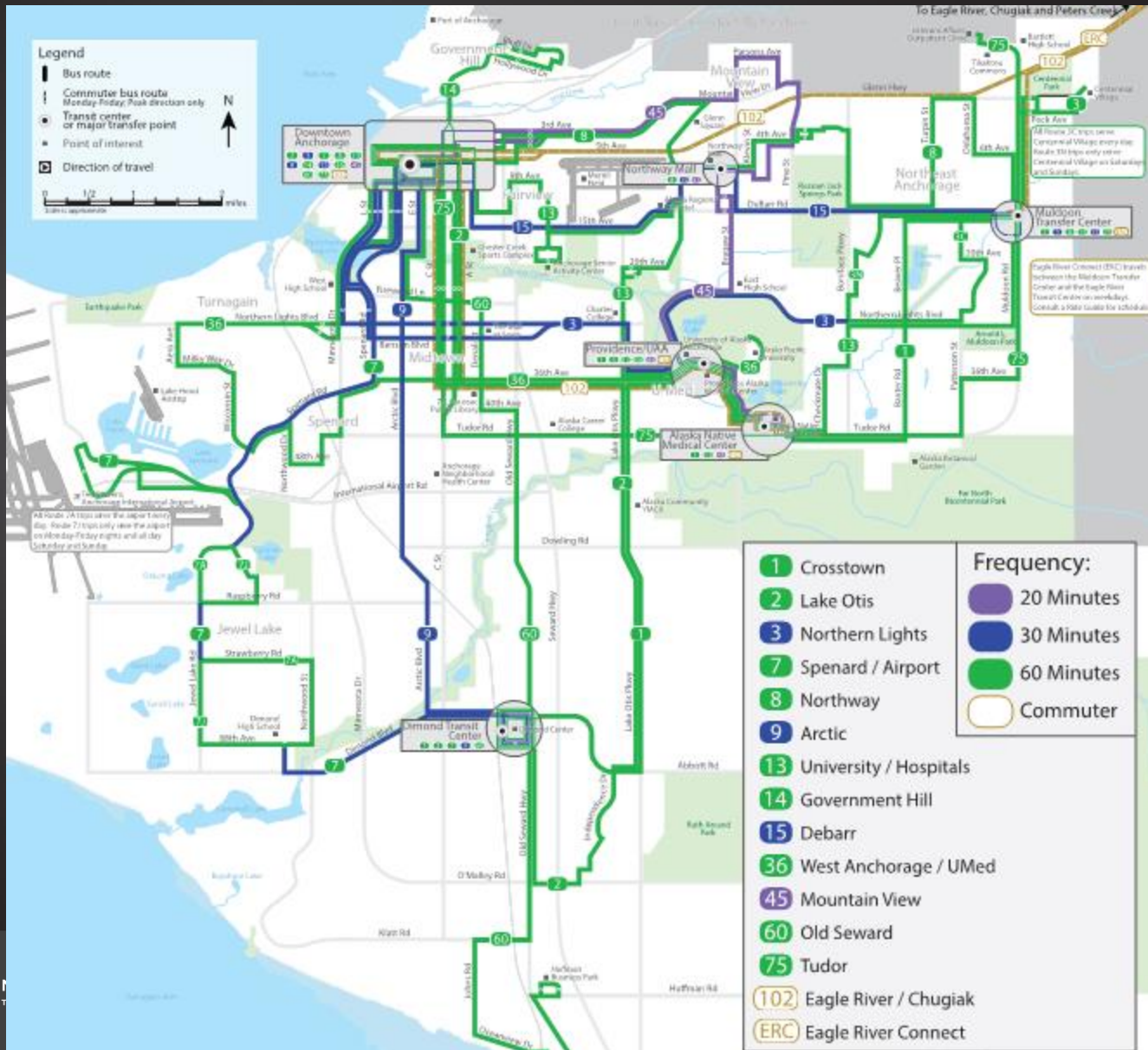
Andrew Ooms, P.E.

Senior Engineer

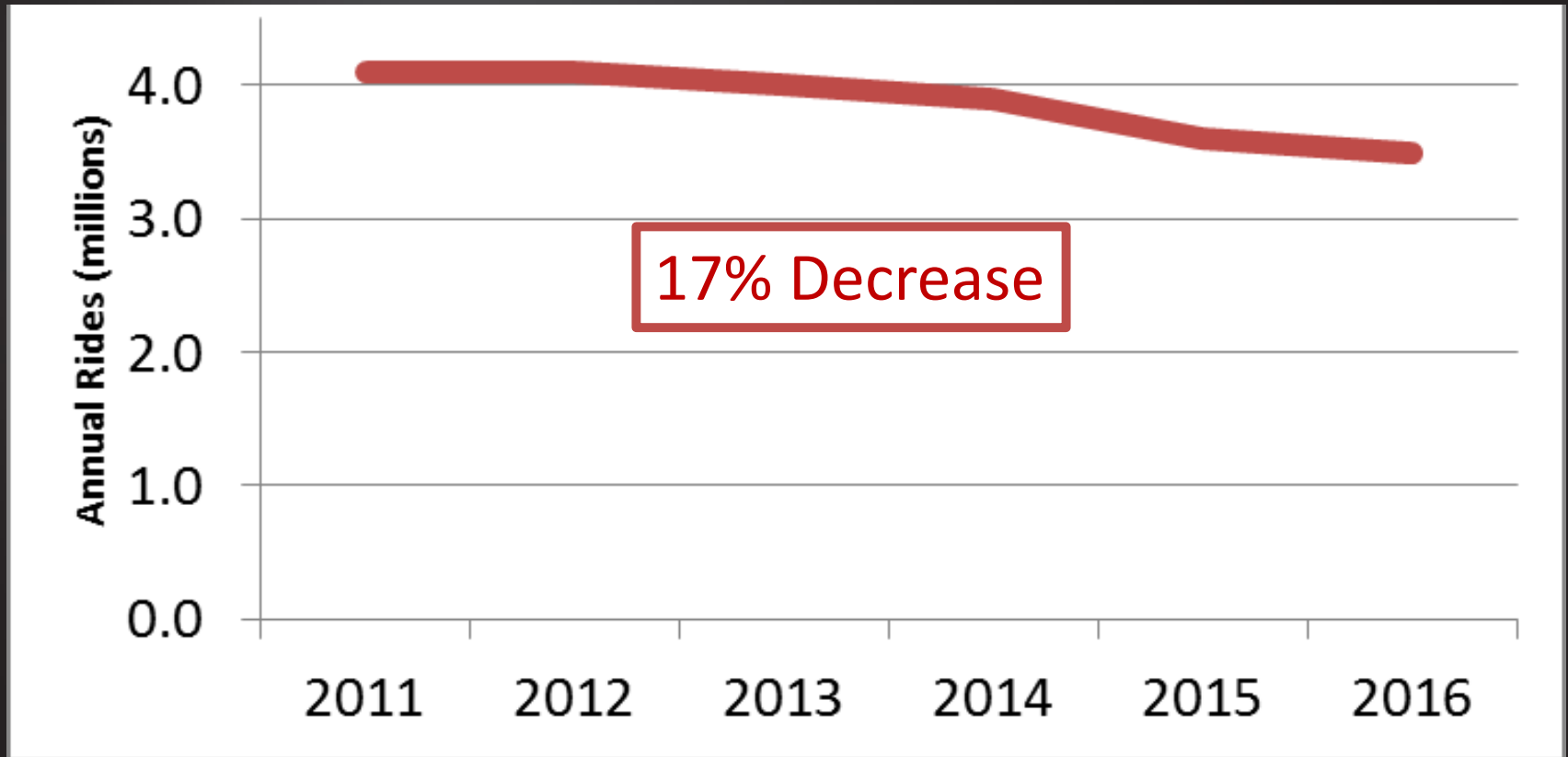
Kittelson & Associates, Inc.



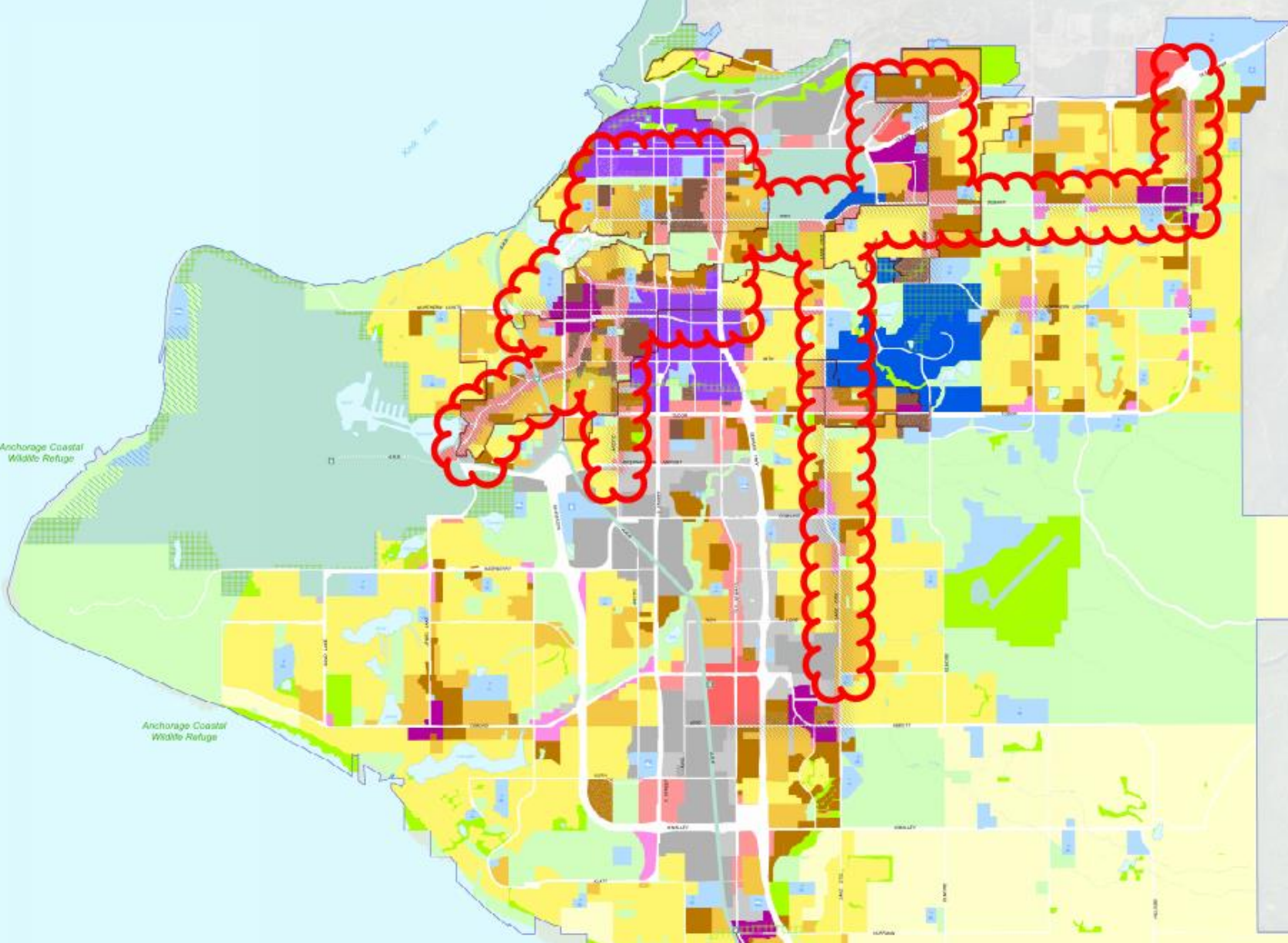
Current People Mover System



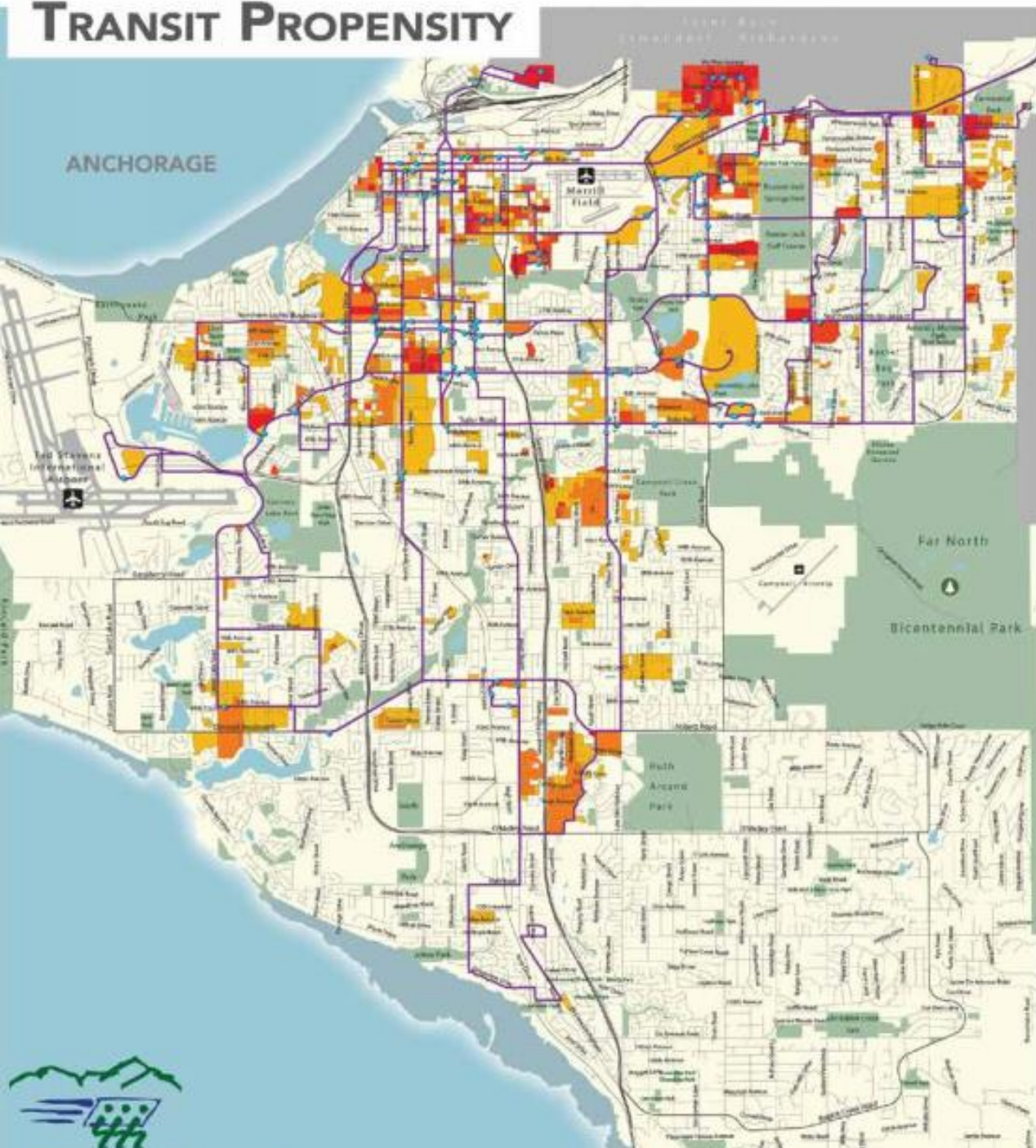
People Mover Ridership



Transit and Land Use



TRANSIT PROPENSITY



Transit Propensity Scores:



This metric combines and weights these indicators of a strong transit market: residential density; household car ownership; income; employment; retail, service and entertainment uses; community and recreation uses; and educational uses.



2017 System Changes

- Ridership Focus
- High Frequency
- Longer Service
- Transfers

New Bus System



Bus Rapid Transit

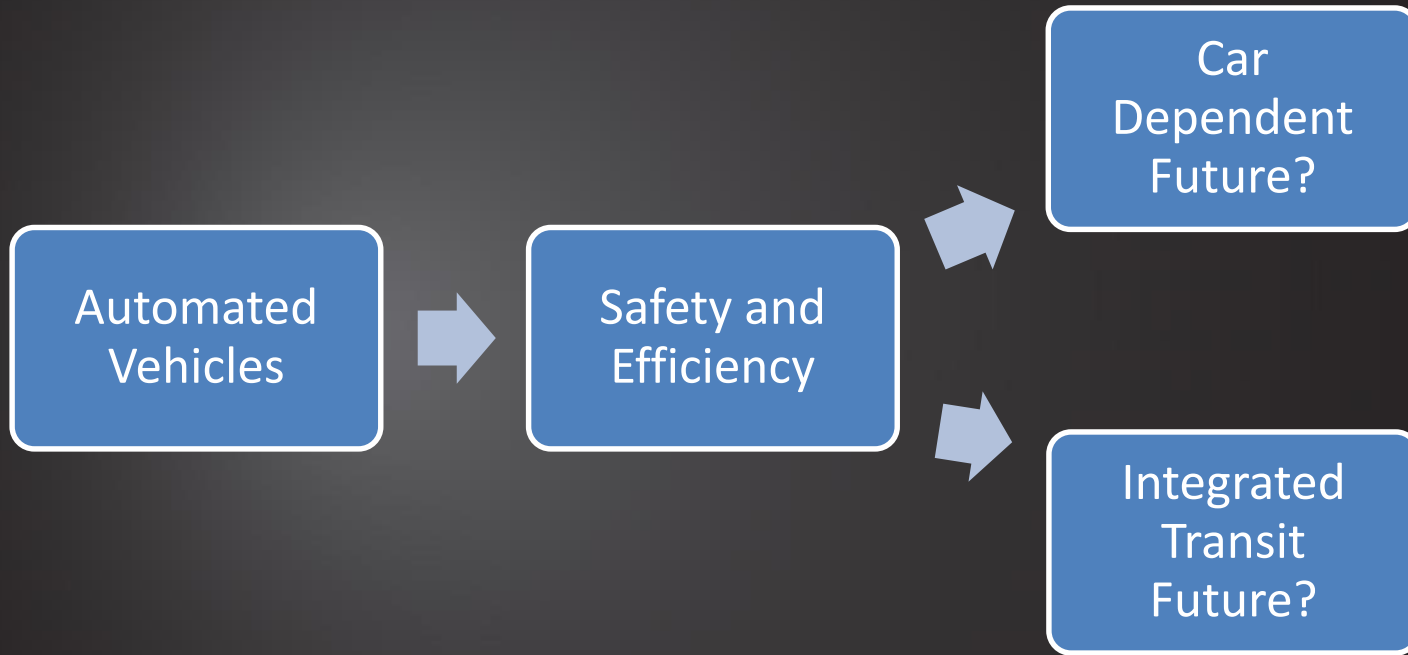


Credit: Wikimedia Commons



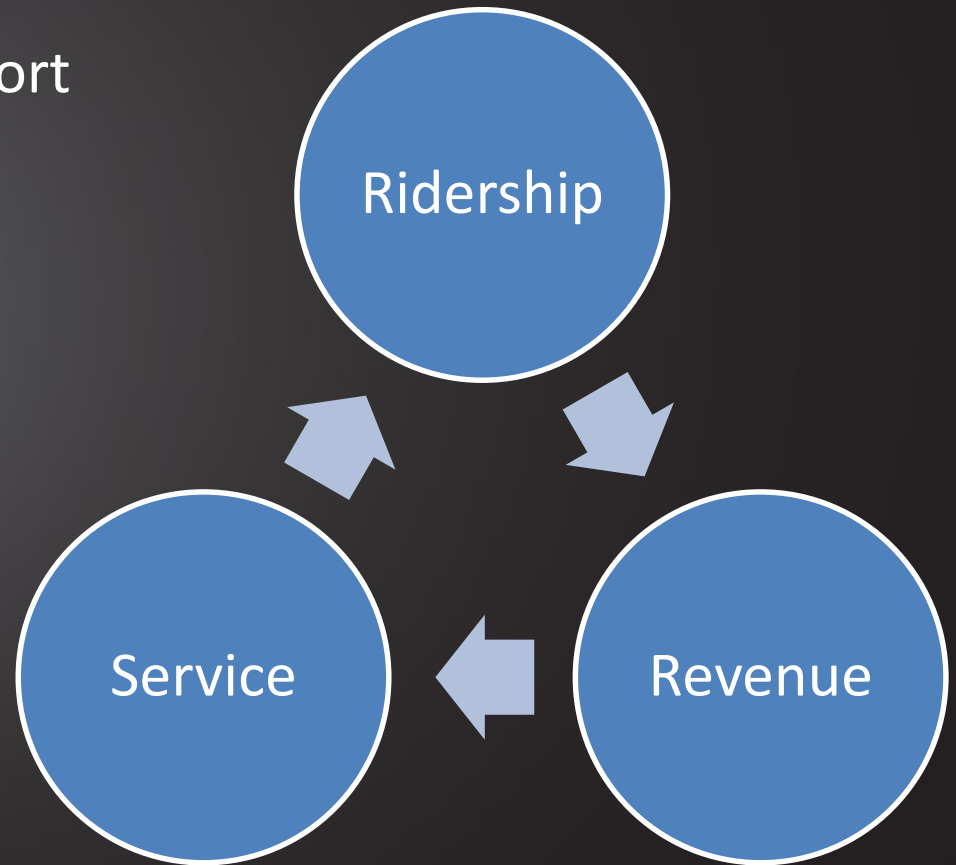
Credit: PaceBus

Two Automated Futures

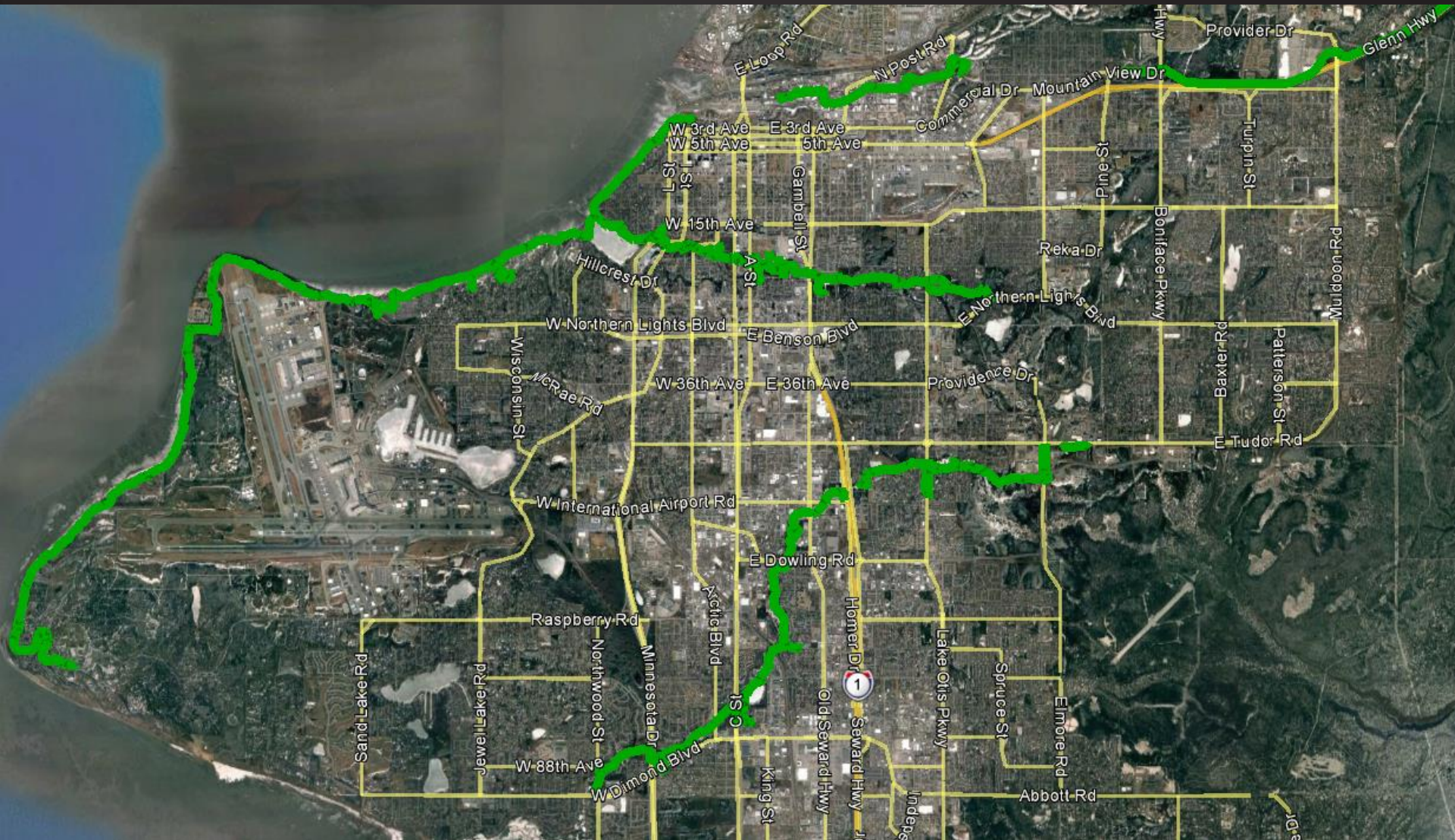


Transit Funding

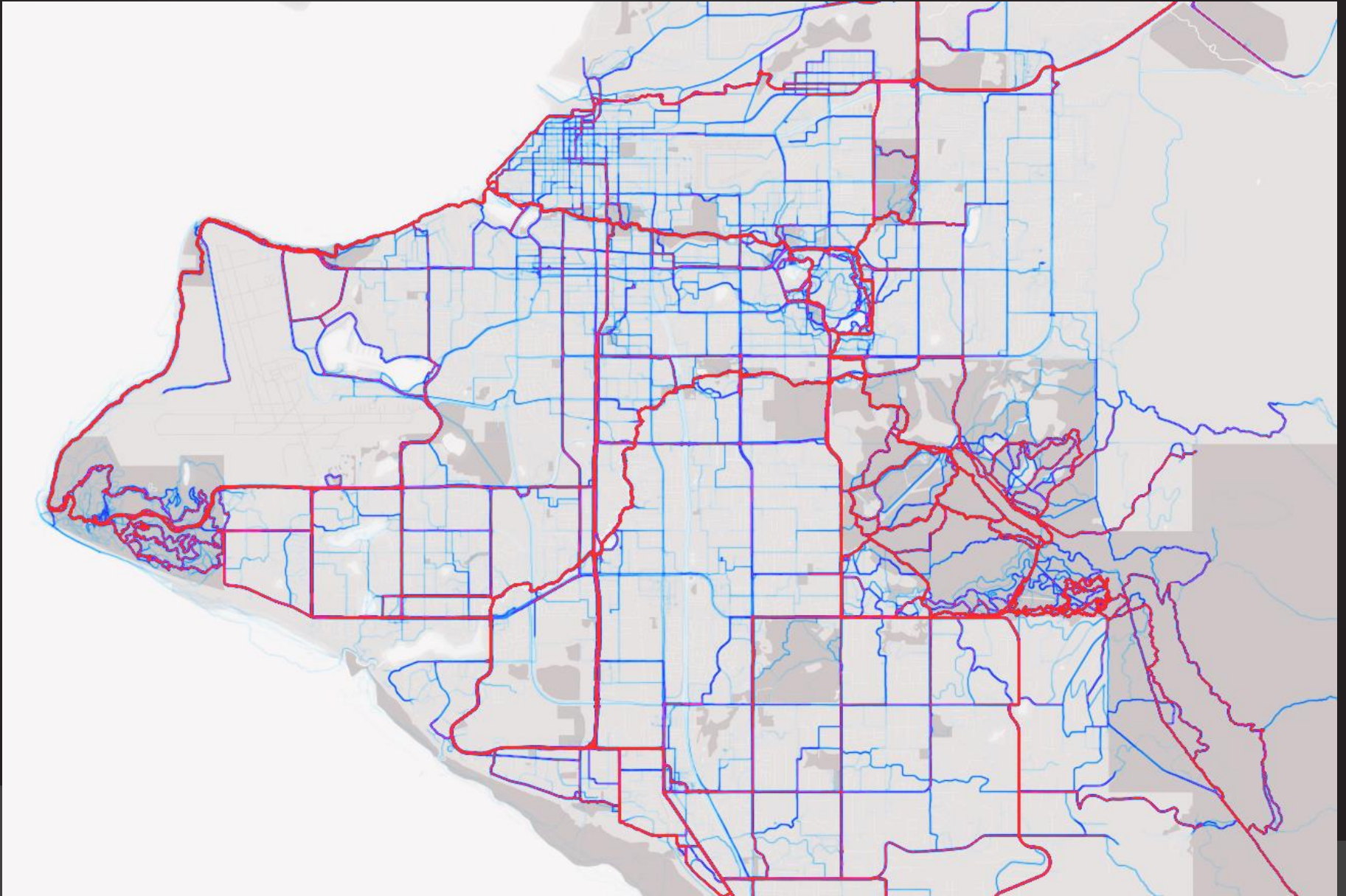
- Increased Ridership
- Community Support
- Business Community Support
- Subsidy Balance



Bicycling in Anchorage



Bicycling in Anchorage



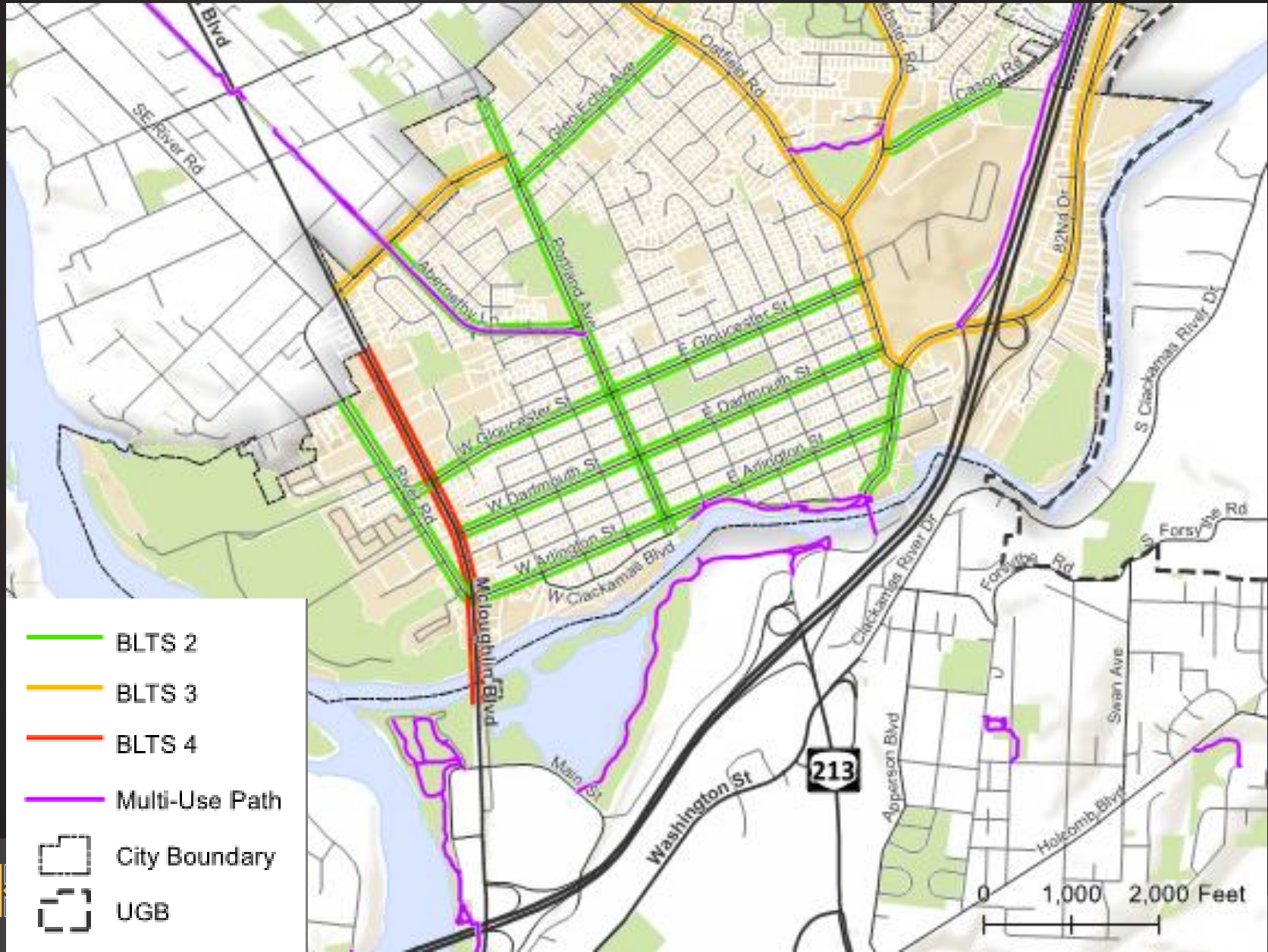
8 to 80 System



Four Types of Transportation Cyclists in Portland By Proportion of Population



Bicycle Network Hierarchy



On-Street Bike Facilities



Signed Routes (No Pavement Markings)

A roadway designated as a preferred route for bicycles.

Shared Lane Markings

A shared roadway with pavement markings providing wayfinding guidance to bicyclists and alerting drivers that bicyclists are likely to be operating in mixed traffic.

On-Street Bike Lanes

An on-road bicycle facility designated by striping, signing, and pavement markings.

On-Street Buffered Bike Lanes

Bike lanes with a painted buffer increase lateral separation between bicyclists and motor vehicles.

Separated Bike Lanes

A separated bike lane is an exclusive facility for bicyclists that is located within or directly adjacent to the roadway and that is physically separated from motor vehicle traffic with a vertical element.

Off Street Trails / Sidepaths

Bicycle facilities physically separated from traffic, but intended for shared use by a variety of groups, including pedestrians, bicyclists, and joggers.

Inspiration

March 2010 • AO2010-08

Anchorage Bicycle Plan

Bicycles as a Mode of Transportation

An element of the MOA Nonmotorized Transportation Plan



ANCHORAGE BIKE PLAN

AMATS
Anchorage Metro Area Transportation Solutions

Anchorage Metropolitan Area Transportation Solutions
Traffic Department - Municipality of Anchorage



VISION ZERO

ANCHORAGE

Oslo moves to ban cars from city centre
within four years

Winter Maintenance is Possible



Minneapolis is breaking new ground in winter plowing of protected bike lanes

How Much Space Can We Afford to Give Cars?



Credit: City of Munster