

Ballot Measure 2

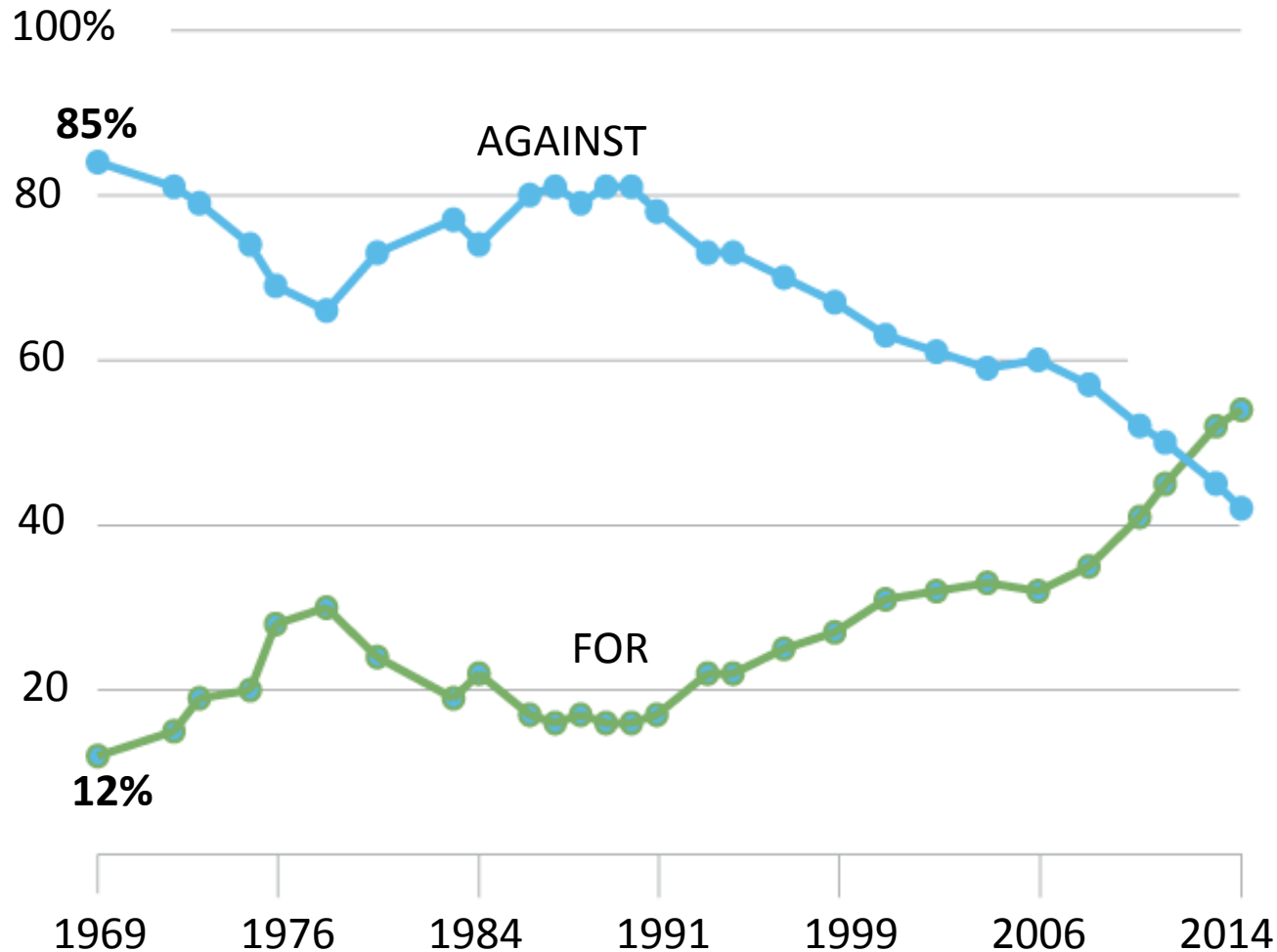
Alaska Common Ground

Dr. Tim Hinterberger



A Shift to Support for Legalizing Marijuana

In more than four decades of polling on the issue, Americans who favor legalizing marijuana became the majority recently.



Source: Pew Research Center



**DARING
DRUG
EXPOSE**

**SHAME!
HORROR
DESPAIR**



MARIHUANA

Weed with roots in Hell!
NOT RECOMMENDED FOR CHILDREN



WHAT
HAPPENS
AT
Marihuans
PARTIES



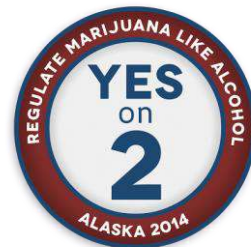
SMOKE
THAT
GETS IN
YOUTH'S
EYES



**WEIRD ORGIES
WILD PARTIES
UNLEASHED
PASSIONS**

This racially freighted history lives on in current federal policy, which is so driven by myth and propaganda that it is almost impervious to reason.”

*An ad for the 1930s film "Marihuana."
Credit: National Library of Medicine*



“The federal law that makes possession of marijuana a crime has its origins in legislation that was passed in an atmosphere of hysteria during the 1930s and that was firmly rooted in prejudices against Mexican immigrants and African-Americans, who were associated with marijuana use at the time...

Myth and propaganda live on, in the “Big Marijuana, Big Mistake” messaging

Examples:

- Focusing on “outsiders” and ignoring local roots of our campaign
- Arguing that marijuana is more dangerous than alcohol
- Suggesting that legalization of marijuana will lead to large increases in its use, especially among teens
- Comparing marijuana to tobacco
- Wildly exaggerating the harms of marijuana concentrates
- Claiming the initiative will lead to “aggressive advertising”
- Claiming the initiative will lead to marketing of “child-friendly edibles”
- Comparing marijuana to crack cocaine
- Misrepresenting the initiative’s “local option”
- Suggesting that marijuana use leads to violent crime
- Suggesting that marijuana use leads to homelessness



Marijuana vs. Alcohol

ALCOHOL	VS	MARIJUANA
		
Does use contribute to...		
YES	Overdose deaths?	NO
YES	Domestic violence?	NO
YES	Sexual assaults?	NO
YES	Fights & injuries?	NO
<i>(Source: Every objective study on alcohol and marijuana)</i>		



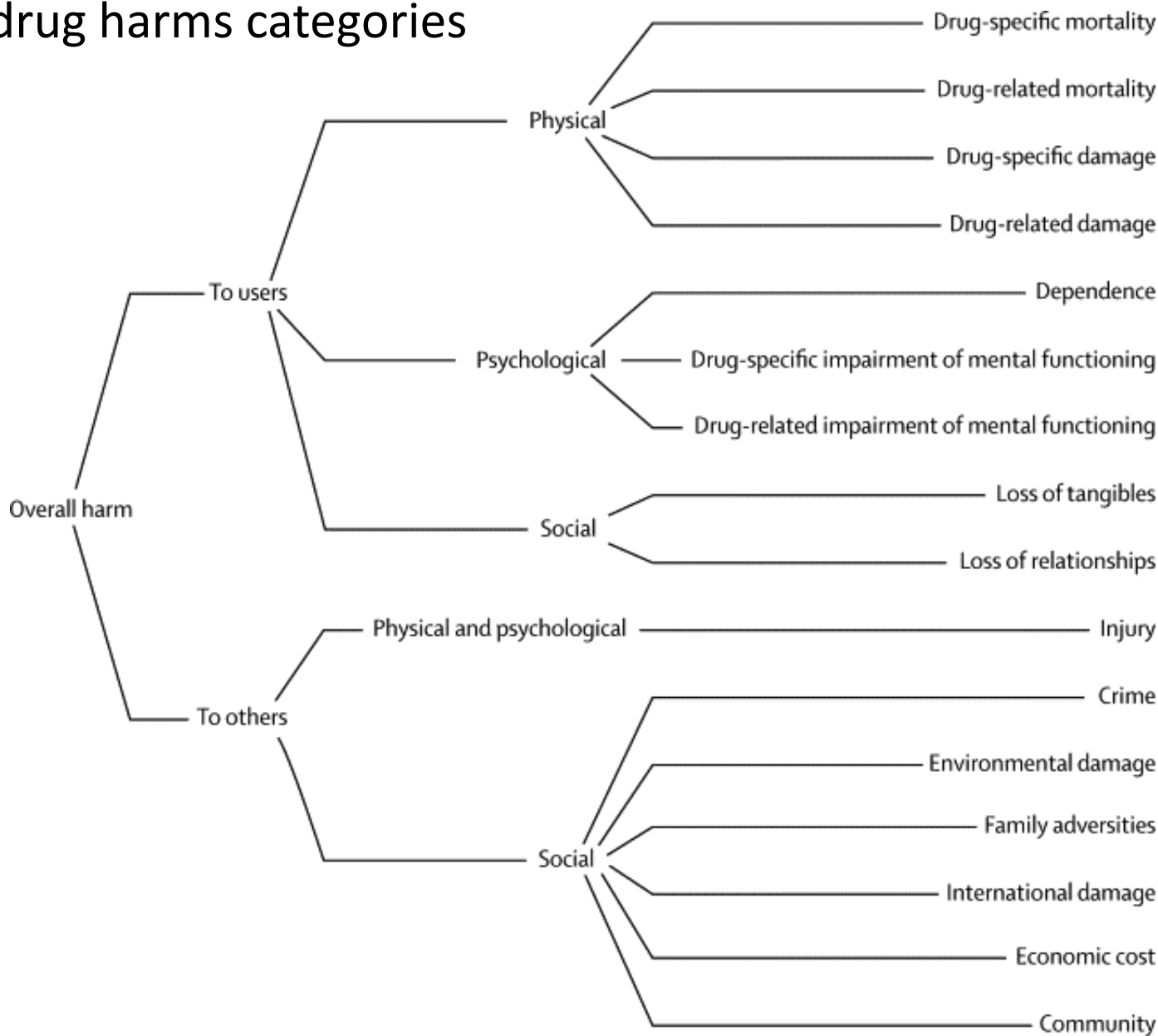
Prof. David Nutt



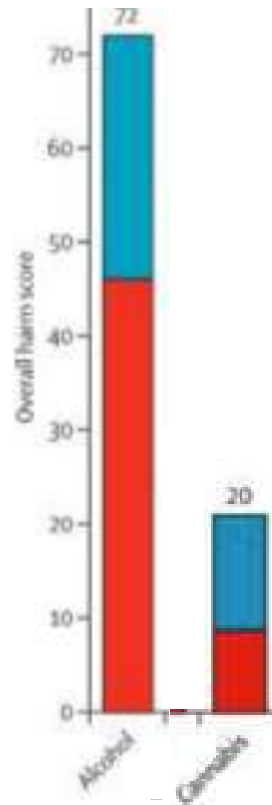
- Director, Neuropsychopharmacology Unit in the Centre for Pharmacology and Therapeutics, Imperial College London
- Sacked in 2009 as chair of the British government's Advisory Council on the Misuse of Drugs, over the mismatch between lawmakers' classification of recreational drugs, in particular that of cannabis, and scientific measures of their harmfulness
- Founder of DrugScience (formerly Independent Scientific Committee on Drugs)
- ISCD authored an influential comparison of the effects of different drugs, published in *The Lancet* in 2010



ISCD drug harms categories



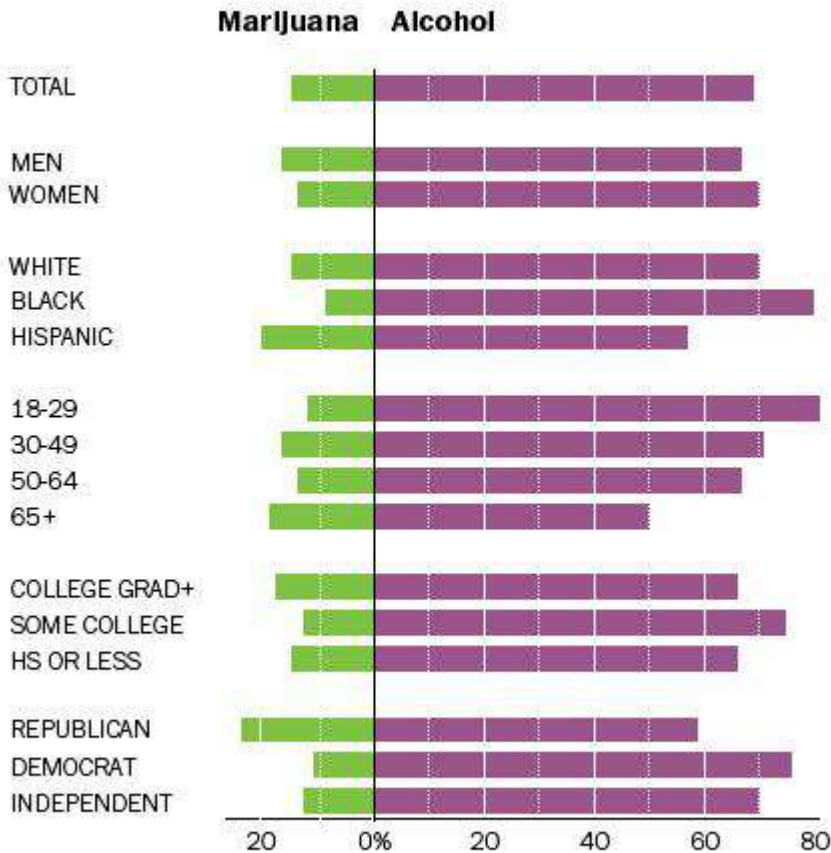
Expert ranking: Overall harms of Marijuana vs. Alcohol



Public opinion: Marijuana vs. Alcohol

The era of Reefer Madness is over

Which is more harmful to a person's health?



SOURCE: Pew Research Center survey conducted Feb. 14-23, 2014 (n = 1,821)

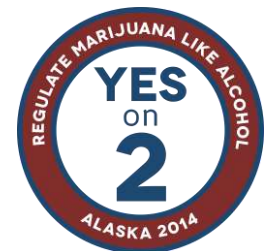
GRAPHIC: The Washington Post. Published April 2, 2014

CNN Poll

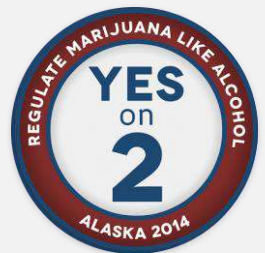
73% Alcohol is more dangerous
12% Marijuana is more dangerous

Pew Research Poll

69% Alcohol is more dangerous
15% Marijuana is more dangerous



Regulation is working



Regulation is working in Colorado



Ron Kammerzell
Colorado director of marijuana
enforcement

“We’re pretty pleased thus far with the rollout of Amendment 64. We started issuing licenses in January. That process went very well.”

“I don't have any crime statistics in front of me right now. But I can tell you anecdotally that the average person would say **it was much ado about nothing.** I would say that the rollout was extremely smooth, the sky hasn't fallen like some had predicted, and we're moving forward and trying to fine tune this regulatory model.”



Regulation is working in Colorado

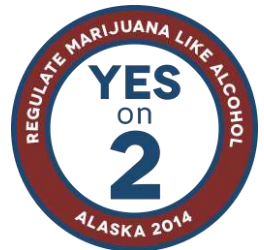


Colorado's Rollout of Legal Marijuana is Succeeding

John Hudek, The Brookings Institution
July, 2014

“It’s too early to judge the success of Colorado’s *policy*, but it is not too early to say that the rollout—initial implementation—of legal retail marijuana has been largely successful.

“**The state has met challenging statutory and constitutional deadlines** for the construction and launch of a legal, regulatory, and tax apparatus for its new policy. **In doing so, it has made intelligent decisions** about regulatory needs, the structure of distribution, prevention of illegal diversion, and other vital aspects of its new market. **It has made those decisions in concert with a wide variety of stakeholders in the state.**”



Regulation is working in Colorado

The
New York
Times

“The ominously predicted harms from legalization — like blight, violence, soaring addiction rates and other ills — remain imaginary worries. Burglaries and robberies in Denver, in fact, are down from a year ago. The surge of investment and of jobs in construction, tourism and other industries, on the other hand, is real.”

The Great Colorado Weed Experiment

The New York Times

August, 2014



Regulation is working in Washington State



“You are not going to be walking into a giant green haze of smoke. Seattle hasn’t really changed that much with the passage of I-502.”

Sgt. Sean Whitcomb, Spokesperson
Seattle Police Department



RegulateMarijuanaInAlaska.org

